



MILFORD BROOK SCHOOL

2017-2018

County: MONMOUTH
 District: MANALAPAN-ENGLISHTOWN REG
 Principal: MRS. PEPCHINSKI
 20 GLOBAL TERRACE
 MANALAPAN, NJ 07726-1599
<http://www.mersnj.us/mb>
 (732)786-2780

Total students: **534**

- Economically Disadvantaged: **9.0%**
- Students with Disabilities: **10.9%**
- English Learners: **4.5%**
- Grades offered: **KG-05**
- Student to Teacher Ratio: **13:1**
- Teacher Average Experience (years): **10.3**

School Highlights Reported by the District

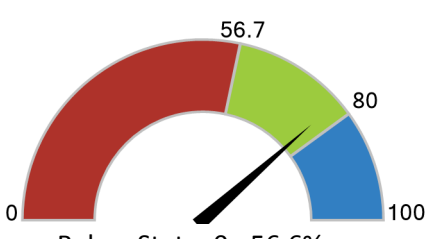
- Technology-enhanced lessons are supported by use of Chromebooks, IPADS, SMARTBoards, and document cameras.
- Curriculum includes EnVision 2.0 Math, Balanced Literacy, and Writing Workshop.
- A Problem Solving Team approach and implementation of an RTI model for learning supports student needs.

How did students perform on assessments?

Students that met or exceeded expectations on statewide assessments

English Language Arts

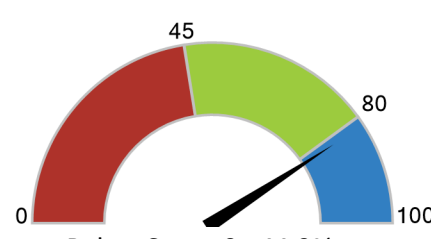
77%



Below State: 0 - 56.6%
Met State: 56.7 - 79.9% ✓
 Met Goal: 80 - 100%

Math

81.7%

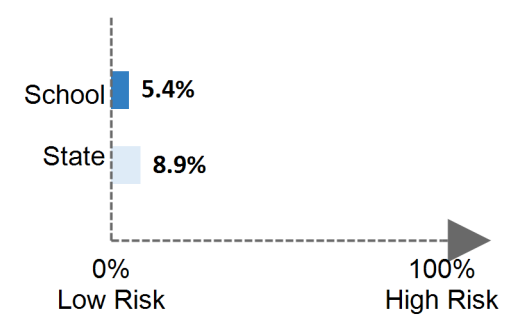


Below State: 0 - 44.9%
Met State: 45 - 79.9% ✓
 Met Goal: 80 - 100%

Are students at risk?

Students that were absent for 10% or more of days enrolled

Chronic Absenteeism



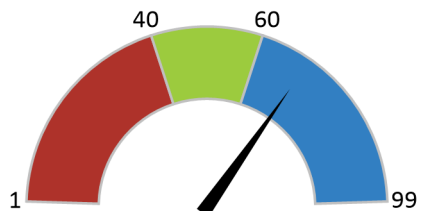
How does student growth compare to other students?

Median Student Growth Percentile

Each student gets a **student growth percentile** from 1 to 99 for English (4th to 8th grade) and Math (4th to 7th grade) that explains their progress compared to students who had similar test scores in the past. If the student growth percentiles for all students in the school are ordered from smallest to largest, the **median student growth percentile** is the percentile in the middle of that list.

English Language Arts

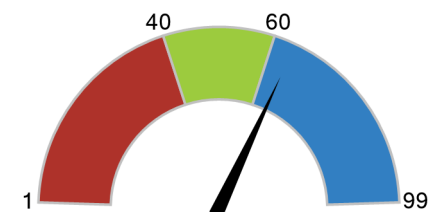
69.5



Below Standard: 1 - 39.5
 Met Standard: 40 - 59.5
Exceeds Standard: 60 - 99 ✓

Math

64



Below Standard: 1 - 39.5
 Met Standard: 40 - 59.5
Exceeds Standard: 60 - 99 ✓

How to use this report?

- 1 Learn More about this school by viewing the [detailed report](#).
- 2 Start Conversations with school community members and ask questions.
- 3 Engage with your school communities to identify where schools are doing well and where they can improve.